

Supplementary Figures

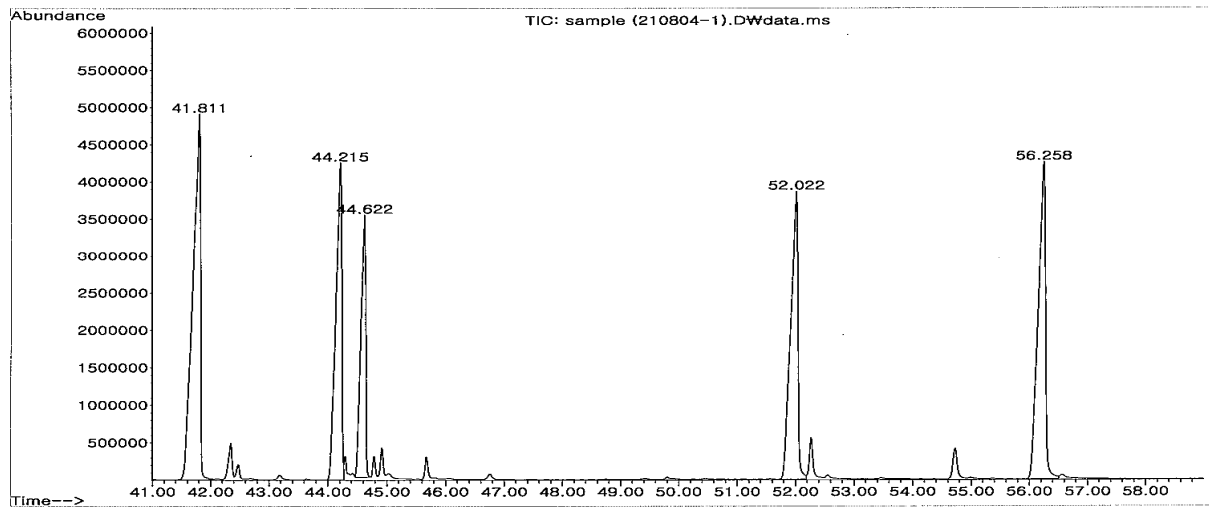


Fig. A. (i). *P. putida* supernatant chromatogram after extraction with ethyl acetate.

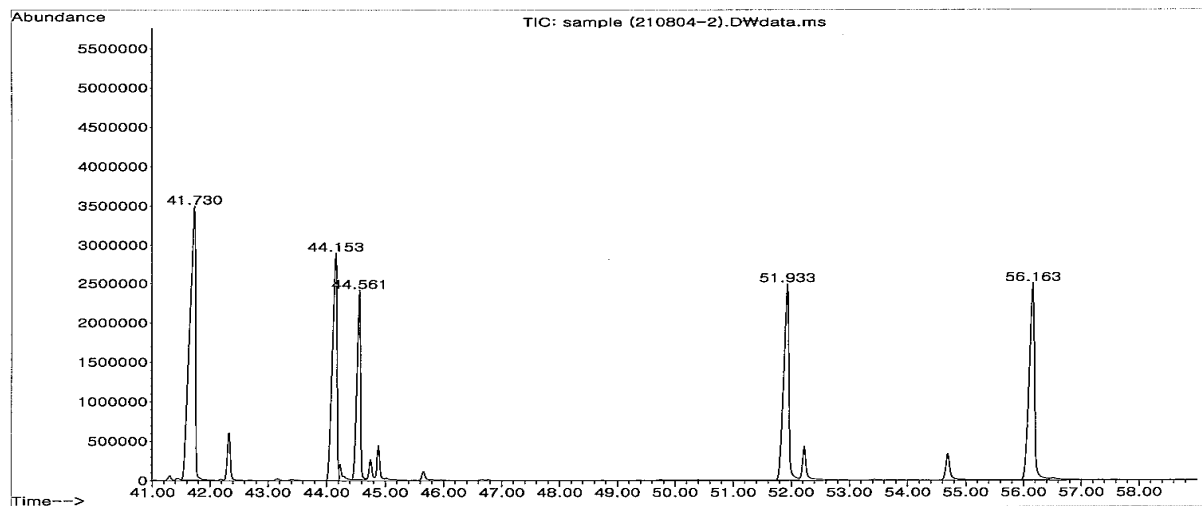


Fig. A. (ii). *B. licheniformis* supernatant chromatogram after extraction with ethyl acetate.

Supplementary Fig. A. *Pseudomonas putida* and *B. licheniformis* supernatants chromatograms after extraction with ethyl acetate.

The other two major peaks in both chromatograms with the retention time (RT) of Fig. A. (i). RT-44.215; 52.022 and in Fig. A. (ii). RT - 44.153; 51.933 are extra peaks were also detected for the same type of compounds.